



**Features**

**Universal Tool-Free Mounting** designed for ease-of-use and rapid deployment.

**Robust, Flame Retardant** ABS plastic panel that meets the most demanding requirement.

**Patented Snappable Design** offers greater flexibility when applying on different sizes of RU height.

**Scratch Resistance Textured Surface** that offers both aesthetic appearance and industrial durability.

**Recyclable Lightweight Plastic** that is both durable and environmentally friendly.

## The best 6RU blanking panel that fits any 19" rack cabinet.

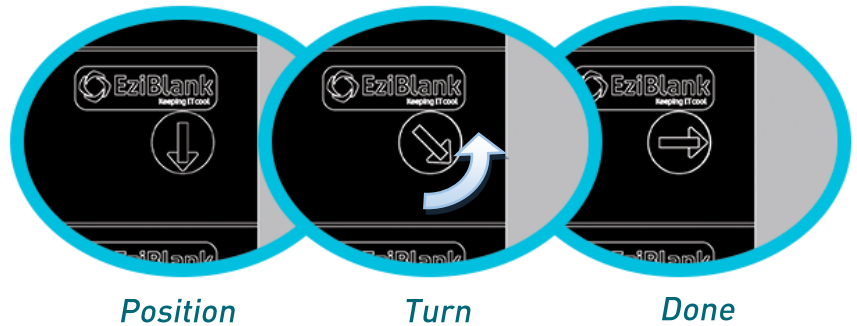
EZIBLANK® 6-RU Blanking Panel is a well received innovative Australian data centre product that is made of the high quality flame retardant ABS plastic. The latest addition of EziBlank® Blanking Panels is assembled with specially designed knob latches that are made of medical grade thermoplastic elastomer rubber. The panel also has moulded positioning studs to assist with the alignment of the panel so that it can be installed easily onto any EIA-310 -D compliant 19" server rack regardless of the type of mounting hole.

The modular feature of the EziBlank® 6-RU Blanking Panels makes it the perfect server rack accessory for data centre operators where separated panels can be installed and reused onto different RU heights of unused space.

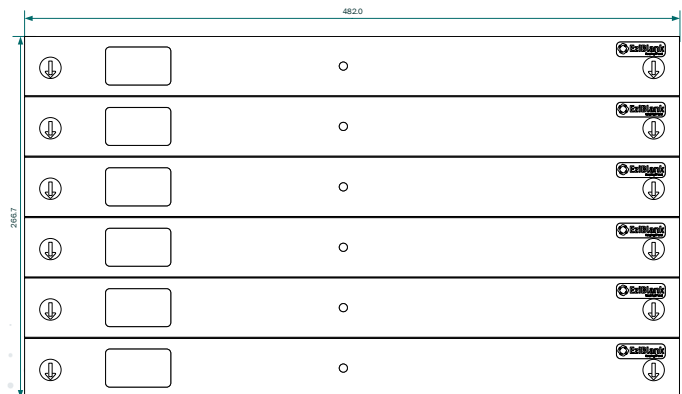
**Specifications:**

Physical	
Dimensions:	270 x 483 x 19 (6RU Panel, in mm)
Weight:	430g per panel or 4.3kg per pack of 10.
Packaging:	500 x 300 x 130 (mm), 4.3kg
Material:	Panel: Impact resistant, water resistant, anti-static ABS plastic Knob Latch: Ethylene Propylene Thermoplastic elastomer (EPTR)
Conformance	
Standards:	EIA-310-D Mounting Hole Spacing
Environmental:	RoHS
Toxicity	Non toxic and resistant to chemicals
Flammability	Data centre ready UL flame retardant ABS plastic.

**Locking mechanism:**



**Dimensions:**



**Ordering Information:**

BKPNL01U-BL  
EZIBLANK® 6-RU Blanking Panel (Universal, Black, Pack of 10)



Data Centre, Power Monitoring & Air Flow Management Specialists.

Telephone +61 (02) 9690 2852  
Facsimile +61 (02) 9698 6952  
enquiries@idcsolutions.com.au  
www.eziblack.com