

## Shipping Dimension Sheet

### 19" 6RU Standard Blanking Panel (BKP NL01-B | BKP NL01-W | BKP NL03)

	Shipping Dimension (cm)	Weight (kg)
1 Box	50 x 30 x 10	3.9
1 Package (5 Boxes)	50 x 30 x 50	19.5
1 Pallet (136 Boxes)	112 x 112 x 185	550
	Shipping Dimension (in)	Weight (lb)
1 Box	20 x 12 x 4	8.6
1 Package (5 Boxes)	20 x 12 x 20	43
1 Pallet (136 Boxes)	44 x 44 x 73	1212

### 19" 6RU Universal Blanking Panel (BKP NL01U-BL | BKP NL01U-WH)

	Shipping Dimension (cm)	Weight (kg)
1 Box	50 x 30 x 13	4.3
1 Package (4 Boxes)	50 x 30 x 52	17.2
1 Pallet (104 Boxes)	112 x 112 x 180	467
	Shipping Dimension (in)	Weight (lb)
1 Box	20 x 12 x 5	9.5
1 Package (4 Boxes)	50 x 30 x 20	38
1 Pallet (104 Boxes)	44 x 44 x 70	1030

### 21" 10SU Universal Blanking Panel (BKP NL02U-21-BL | BKP NL02U-21-G)

	Shipping Dimension (cm)	Weight (kg)
1 Box	55 x 30 x 13	4.4
1 Package (4 Boxes)	55 x 30 x 52	17.6
1 Pallet (104 Boxes)	112 x 112 x 180	480
	Shipping Dimension (in)	Weight (lb)
1 Box	22 x 12 x 5	10
1 Package (4 Boxes)	22 x 12 x 20	39
1 Pallet (104 Boxes)	44 x 44 x 70	1060

### 23" 6RU Universal Blanking Panel (BKP NL02U-23-BL)

	Shipping Dimension (cm)	Weight (kg)
1 Box	60 x 30 x 13	5.2
1 Package (4 Boxes)	60 x 30 x 52	20.8
1 Pallet (78 Boxes)	120 x 110 x 180	426
	Shipping Dimension (in)	Weight (lb)
1 Box	24 x 12 x 5	11.5
1 Package (4 Boxes)	24 x 12 x 20	46
1 Pallet (78 Boxes)	47 x 43 x 70	939

### EziBlank Modular Wall (EZWM23UPNL02)

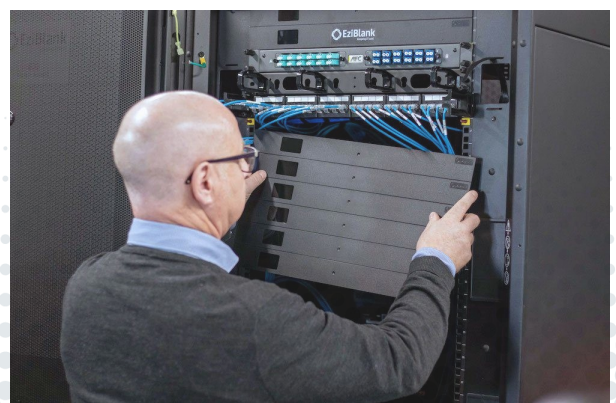
	Shipping Dimension (cm)	Weight (kg)
1 Pack	115 x 80 x 6	5.5
1 Pallet (50 Packs)	185 x 130 x 125	284
	Shipping Dimension (in)	Weight (lb)
1 Pack	45 x 32 x 2.5	12
1 Pallet (50 Packs)	73 x 51 x 49	626

### Add on Angle for EziBlank Wall (EZWA50-PNL04 | EZWA50-PNL04-W)

	Shipping Dimension (cm)	Weight (kg)
1 Pack (4 Angles)	53 x 10 x 10	1
1 Box (20 Packs)	53 x 30 x 20	20
	Shipping Dimension (in)	Weight (lb)
1 Pack (4 Angles)	21 x 4 x 4	2.2
1 Box (20 Packs)	21 x 12 x 8	44

### 19" 1RU Brush Panel (EZBR19X1UPNL05)

	Shipping Dimension (cm)	Weight (kg)
1 Pack (5 Brushes)	50 x 6 x 3.5	0.48
1 Box (25 Packs)	53 x 30 x 30	12
	Shipping Dimension (in)	Weight (lb)
1 Pack (5 Brushes)	20 x 2.4 x 1.4	1
1 Box (25 Packs)	21 x 12 x 12	26.5



**Sub-Rack Flexible Brush Panel 605mm  
(EZBRFLEXSUB605 - 605mm)**

	<b>Shipping Dimension (cm)</b>	<b>Weight (kg)</b>
1 Pack (2 Brushes)	60 x 10 x 2	0.65
1 Box (20 Packs)	60 x 20 x 20	13
	<b>Shipping Dimension (in)</b>	<b>Weight (lb)</b>
1 Pack (2 Brushes)	20 x 4 x 0.8	1.45
1 Box (20 Packs)	24 x 8 x 8	29

**Sub-Rack Flexible Brush Panel 800mm  
(EZBRFLEXSUB800 - 800mm)**

	<b>Shipping Dimension (cm)</b>	<b>Weight (kg)</b>
1 Pack (2 Brushes)	80 x 16 x 2.5	0.75
1 Box (15 Packs)	81 x 20 x 20	11.5
	<b>Shipping Dimension (in)</b>	<b>Weight (lb)</b>
1 Pack (2 Brushes)	31 x 6 x 1	1.65
1 Box (15 Packs)	32 x 8 x 8	25

**Australia - Hurstville Head Office / Taren point Warehouse**

- All orders are ex-works from either our Taren Point warehouse or Hurstville Head Office (NSW).
- IDC can arrange shipping for a cost, please make a request at time of quoting.

**Europe - Antwerp Warehouse / Holland Warehouse**

- Orders are ex-works from our bonded 3PL warehouse in Antwerp. Customer will need to arrange customs clearance and collection for shipping. IDC may be able to arrange the clearance (only), for a fee.
- Orders are ex-works from our Holland warehouse. These items are cleared into the EU. Any request for IDC to arrange shipping will be on a case by case basis, charged at cost.

**UK - Middx. Warehouse**

- Orders are ex-works from our bonded 3PL warehouse in Middx. Customer will need to arrange customs clearance and collection for shipping. IDC may be able to arrange the clearance (only), for a fee.
- Any request for IDC to arrange shipping will be on a case by case basis, charged at cost.

**Asia - Johor Warehouse, Taiwan Warehouse**

- Orders are ex-works from either our warehouse in Johor, Malaysia or from Taiwan.
- IDC can arrange shipping for a cost, please make a request at time of quoting.
- Any applicable duties or taxes are the responsibility of the customer unless otherwise negotiated.

**North America - Chicago Warehouse**

- All orders are ex-works from our 3PL warehouse in Chicago.
- Customer will need to arrange shipping from the warehouse, when advised order is ready for collection.
- Any request for IDC to arrange shipping will be on a case by case basis, charged at cost.

**Africa - Mombasa Warehouse / Durban Warehouse**

- All orders are ex-works from our 3PL warehouse in Durban or Mombasa.
- Customer will need to arrange shipping from the warehouse, when advised order is ready for collection.
- Any request for IDC to arrange shipping will be on a case by case basis, charged at cost
- Any applicable duties or taxes are the responsibility of the customer unless otherwise negotiated.

