



Modular Wall Installation Instructions (EZWM23UPNL02)



1. Bring flap and 750mm side together to form the triangle structure **



2. Velcro together ensuring that there is a straight line along the 600mm side corner as shown above

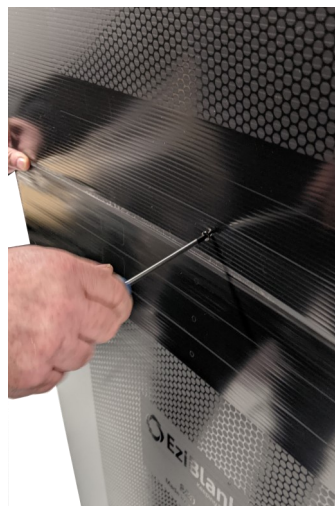


3. For added structural integrity, install the provided self-tapping screws to secure structure (see Image 3 above)



4. To build the second Modular Wall structure, repeat steps 1 to 3. Lift and place the second Modular Wall structure on top of the first modular wall, ensuring:

- Side dimensions match up,
- Each side is flush with the stability flaps.



5. Install the provided self-tapping screws to each of the three sides of the structure securing the outside face to the stability flap.



6. Your energy saving Modular Wall structure is ready for deployment

** For added safety, work gloves can be worn when assembling and cutting EziBlank products.

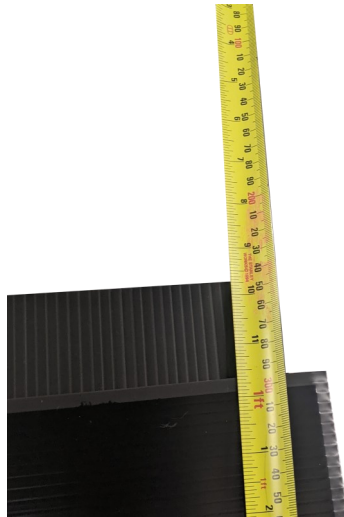


Data Centre, Power Monitoring & Air Flow Management Specialists.

Telephone +61 (02) 9690 2852
 Facsimile +61 (02) 9698 6952
 enquiries@idcsolutions.com.au
 www.idcsolutions.com.au



Modular Wall Extension Installation (EZWM23UPNL02)



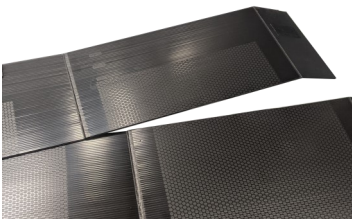
1. Measure required addition height from top of the Modular Wall



2. Measure from base of Modular Wall and mark



3. Cut along flute with the aid of a straight or hooked blade



4. Assemble height adjusted Modular Wall extension section and secure with self tapping screw



5. Position newly completed Mod Wall section on top of existing Wall structure



6. Secure new section with self tapping screw





Modular Wall Extension Installation (EZWM23UPNL02)



7. New height extended EziBlank® Modular Wall structure complete and in-place as above image.



8. The EziBlank® Modular Wall structure with extended height is shown above.

Modular Angle Installation Instructions (EZWA50-PNL04)

For added stability, the Wall Angle accessory is available. They come in a pack of 4 with required screws and double-sided tape.



1. Simply install provided self-tapping screws to secure the Angle to the bottom of the cold aisle-facing side



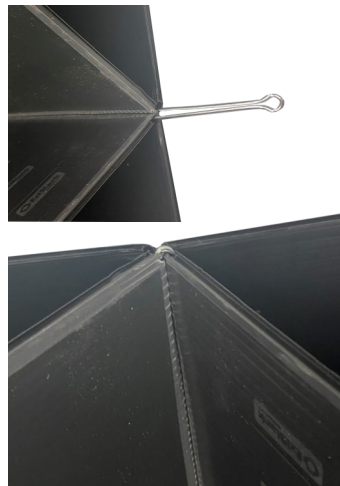
2. OPTIONAL: Use the double-sided tape provided to adhere the floor-facing side of the Wall Angle to the floor. We have provided this option for our customers.



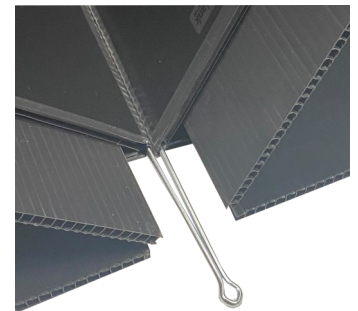
Installing Pins with Modular Walls (EZWM23UPNL02)



1. Lay Modular Walls on the ground, with the intended Cold Aisle-facing sides face down.



2. Insert pins to underside of Modular walls as shown above and employ pressure and lightly tap to ensure pin is installed flush.



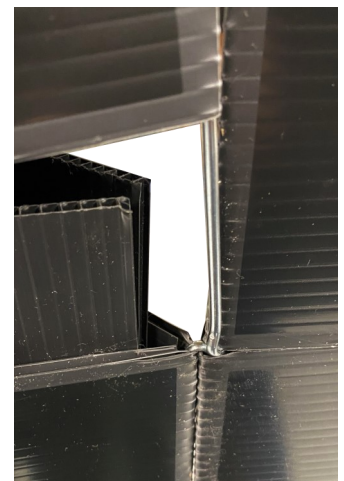
3. Insert pin to topside of Modular Wall as per previous process.



4. Place top half of Modular Wall on top of one side of structure as shown above



5. Lift corner approximately 50mm in order to insert pin as shown above

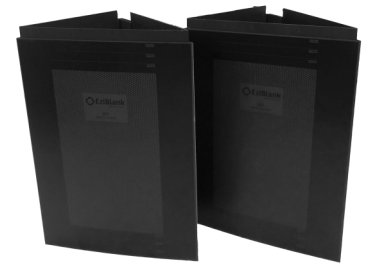


6. Bring second top half of Modular Wall structure in place and guide the pin into the apex as shown above. (This will bring the two Modular Wall structures firmly together)

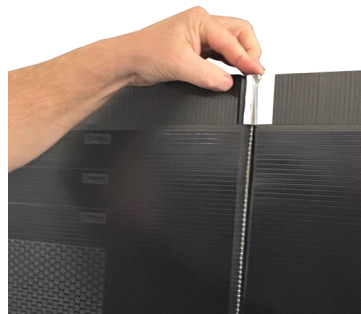




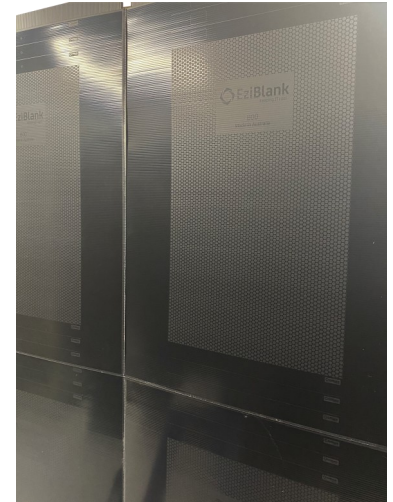
Installing Pins with Modular Walls (EZWM23UPNL02)



7. All 4 Modular Wall pieces together should look like the above picture



8. Finally, with the aid of a ladder, insert the final pin to secure the top halves of the two Modular Wall structures together



9. Your finished, installed Modular Wall structure should look like the picture above

NOTE: The above picture uses 2 packs of Modular Walls (EZWM23UPNL02)

Parts in the Instructions

1. EziBlank Modular Wall (EZWM23UPNL02)
2. EziBlank Modular Angle (EZWA50-PNL04)
3. EziBlank Zinc Pins (EZWZP-01)
4. Cutter Tool (EZWCTL01)

